

# BELHAVEN SUBDIVISION

CAMBRIDGE TOWNSHIP  
GUERNSEY COUNTY

SITUATED IN:  
THE STATE OF OHIO, COUNTY OF GUERNSEY,  
TOWNSHIP OF CAMBRIDGE, AND BEING A PART  
OF THE NORTH HALF OF SECTION 1, T2N, R3W,  
OF THE "UNITED STATES MILITARY DISTRICT".

BASIS OF BEARINGS:  
BEARING OF N88°00'00"W ON THE  
SOUTH LINE OF THE SE1/4 OF THE  
NW1/4 OF SECTION 1 IS ASSUMED  
FOR ANGLE CALCULATIONS.

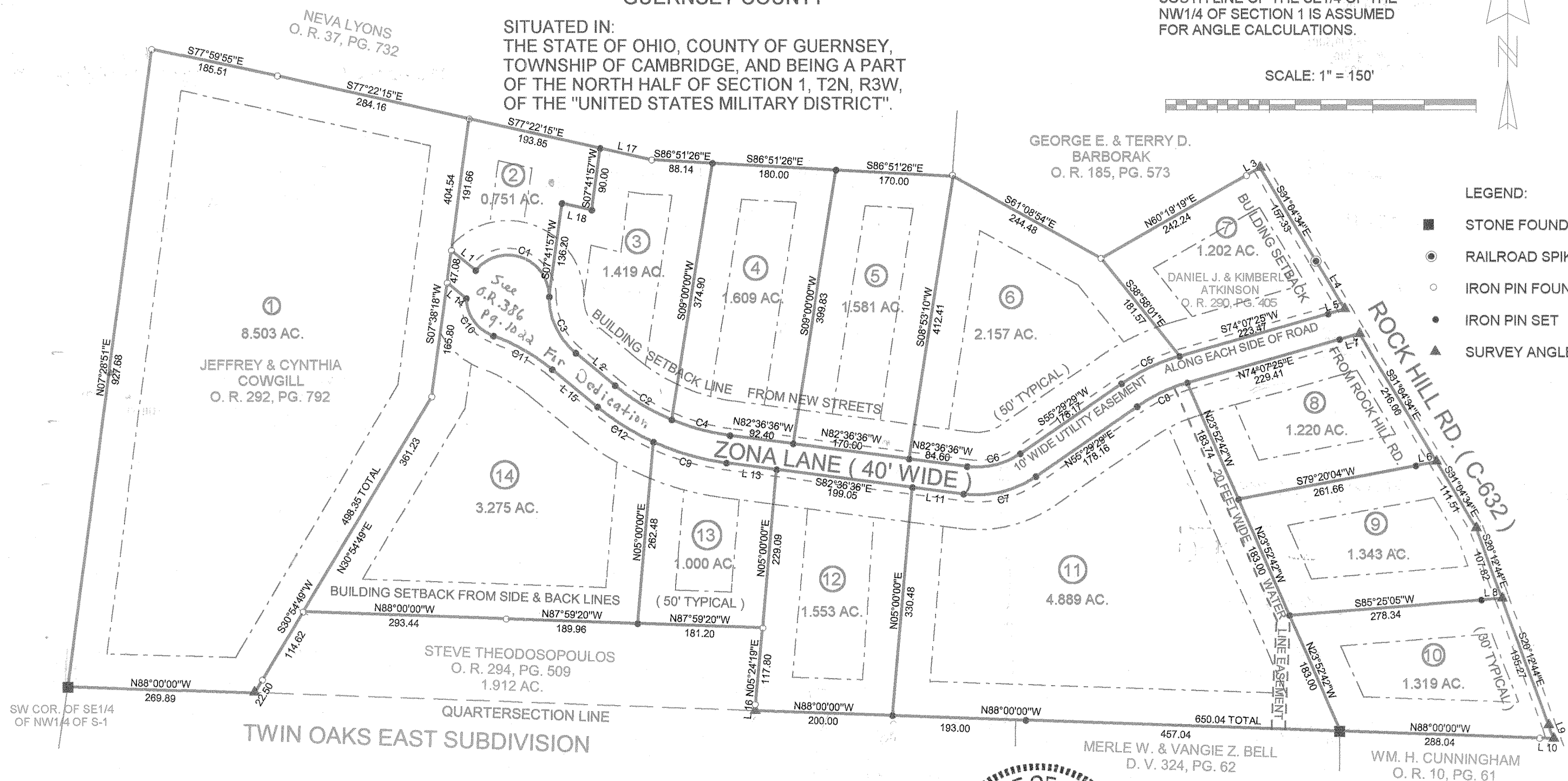
SCALE: 1" = 150'



LEGEND:

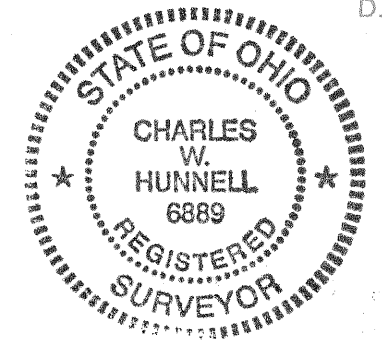
- STONE FOUND
- RAILROAD SPIKE FOUND
- IRON PIN FOUND
- IRON PIN SET
- ▲ SURVEY ANGLE POINT

BOOK 337 PAGE 621



Curve	Delta Angle	Radius	Arc	Tangent	Chord	Chord Bearing
1	140°35'05"	60.00	147.22	167.50	112.97	N70°17'12"W
2	16°48'01"	327.79	48.40	95.77	95.77	N58°55'36"W
3	50°31'57"	104.83	92.46	49.48	89.49	N25°15'46"W
4	15°16'58"	327.79	87.43	43.98	87.17	N74°58'07"W
5	18°37'52"	288.18	93.71	47.27	93.30	S64°48'26"W
6	41°54'05"	110.59	80.88	42.34	79.09	S76°26'18"W
7	41°54'05"	150.59	110.13	57.66	107.69	N76°26'17"E
8	18°37'50"	248.18	80.70	40.71	80.35	N64°48'26"E
9	17°10'00"	367.79	110.19	55.51	109.78	S74°01'36"E
10	67°35'34"	60.00	70.78	40.16	66.75	S36°12'13"E
11	19°28'24"	288.66	98.11	49.53	97.64	S60°15'49"E
12	14°55'00"	367.79	95.75	48.15	95.48	S57°59'06"E

Line	Bearing	Distance
1	N50°31'36"W	45.40
2	N50°31'36"W	73.83
3	N60°19'19"E	22.61
4	S31°04'34"E	81.22
5	S74°07'25"W	25.07
6	S79°20'04"W	30.00
7	N74°07'25"E	30.00
8	S85°25'05"W	30.00
9	S20°03'08"E	20.73
10	N88°00'00"W	20.00
11	S82°36'36"E	74.72
12	N05°24'19"E	2.36
13	S82°36'36"E	73.24
14	S50°31'36"E	35.89
15	S50°31'36"E	84.85
16	N05°24'19"E	2.36
17	S77°22'15"E	76.46
18	N77°22'15"W	44.00



HUNNELL LAND SURVEYING  
350 MAPLE AVE.  
SENECAVILLE, OH 43780  
1-740-685-5049

JOB NO.: 02-35  
DATE: AUGUST 5, 2002